



**This Master's degree is perfect for you if you are in (or wish to move into) a role where you are responsible for the management and deployment of IT security, including infrastructure, policy making, governance, and compliance. The programme considers the impact of the changing IT security landscape and focuses on the design and establishment of prevention plans within the workplace. The changing landscape of technology and its rapid development is placed within the context of the security risks.**

## MODULES ARE:

### Technology and Trend Monitoring

The rapidly changing technological environment means that staying abreast of changes and development is essential for anyone working within a strategic IT role. This module will provide you with the opportunity to evaluate newly emerging technologies and to investigate their application within current business practice. There will be a focus on an analytical approach that can be applied to future investigation of environmental change. The outcome of this module is to evaluate an emerging IT trend and investigate its implementation within current business practice to generate an innovative solution.

### Information Security Strategy Development

Planning for the management of security threats is an essential activity for any organisation that uses IT solutions. This requires effective and flexible strategies implemented by people with specialist knowledge. This module focuses on the main technologies used for security, as well as the evaluation and implementation of established standards and methods for developing robust and effective strategies. The output of this module is two case studies focusing on an evaluation of current security strategy and the development of computer forensic skills.

### Risk Management

Risk is an ever-present aspect of all business activity, and is always key to computer security. This module will explore the skills and methods that can be applied to identify and mitigate risk in an IT environment. Quantitative and qualitative approaches will be investigated and risk enterprise will be introduced, along with its effective implementation. A range of case studies and scenarios will help you develop a critical appreciation of the subject of risk. The output of this module will evaluate risk in current IT practice within your own organisation and an assessment of how new approaches can be deployed to enhance practice.

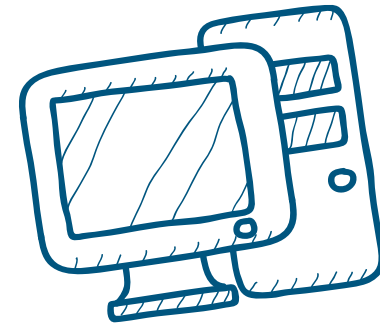
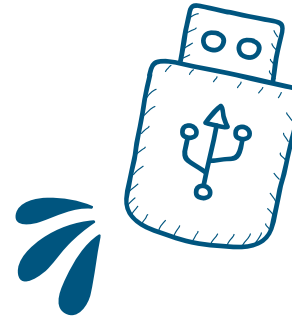


## IT Security Management

The effective management of IT security goes beyond the design of effective strategies. Rigorous and consistent application of policy and methods are crucial to the cyber security of modern organisations. This module studies the techniques required to manage the security of IT systems in organisations of all sizes, as well as how to develop and implement a security recovery plan. The output of this module is an evaluation of your current organisational practice against the policies that govern it and appropriate recommendations for improvement.

## Information Systems Governance

As the use of IT in the workplace continues to grow, the importance of a robust governance framework has never been more important. It plays a key role and incorporates legal, economic, political and technological issues. In this module, you will evaluate how governance can mitigate risk and maximise the benefits associated with various systems and software. The outcome of this module will challenge you to audit current governance approaches, present recommendations for a revised version, and critique the approaches recommended by peers.





## Cloud Systems and Applications

The purpose of this module is to explore the development of cloud computing systems and the potentially disruptive effect that it can have on the usage and management of systems within organisations. You will also explore its benefits to give you a balanced understanding of the consequences of a move to distributed technologies. The outcome of this module is to evaluate the changing nature of cloud computing systems and assess the merits and risks of their implementation in the workplace.

## Research Project

The research project is a vital part of achieving a Master's level qualification, and it is also your chance to undertake research into an area of your choosing which is related to the programme theme. We'll support you through the first stage with six weeks of sessions to help you create your research proposal - you can choose from a conventional dissertation or an academic article and presentation. You will develop your critical abilities and produce a piece of work that's relevant in practice and meets the academic standards required at this level – and, just as importantly, adds value to your organisation and career.

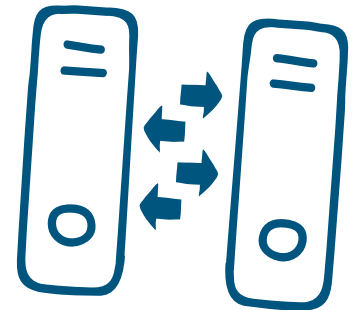
## Course duration and hours of study

This varies depending on your rate of progress: you can access modules at a pace that is convenient for you. Once you have accessed a module, there is a minimum and maximum time that you will need to finish it.

You can find out more information on the course page:

visit [www.arden.ac.uk](http://www.arden.ac.uk).  
Alternatively, please call our admissions team on:

0808 231 0584 for more details.





## Entry requirements

To be eligible for this course you must normally have:

A UK honours degree at a minimum of second class (2.2) or equivalent.

For students whose prior learning was not taught in English:

IELTS 6.5 or equivalent.

## If you don't have academic qualifications

We're more than happy to consider, and positively encourage, an application from you if you have substantial management experience (typically 5 years) and can show us that you have the motivation to study the programme. We will also ask for references and your CV in support of your application.

