



If you have previously completed an appropriate HND (or equivalent) then this Top-Up will enable you to achieve a full undergraduate honours degree in Healthcare Management in just 8 months.

Do you want to become a confident healthcare professional? If you need complex healthcare knowhow you're starting in the right place. By the end of this programme, you'll be able to make informed decisions that lead to better practise in this challenging and changing environment.

## Modules are:

### Quality Management in a Care Setting

How can you be the best manager possible? How do you make sure everyone in the team feels committed to your vision? This module is all about working with staff and service users to create a social care landscape that meets the needs of everyone.

### Business Analysis and Planning

In this module you'll study business analysis: collecting data, using specialist software and reporting it all back to the team.



### Global Health and Sustainability

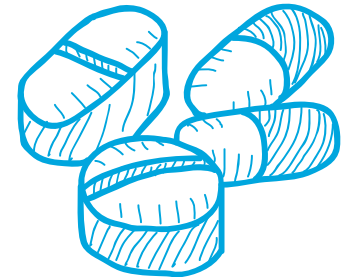
What are the key global sustainability issues? In this complex subject, we have plenty to discuss. From global problems such as poverty, disease and climate change to the impact on healthcare, there's no right or wrong answers so get ready for some healthy debates.

### Project Management and Risk

It's time for a management level-up. You'll learn the complexities of managing finances, projects and contracts. Staff performance, breaches and frustrations are examined - and you'll look closely at the ins and outs of insurance.

### Research Methods and Final Project

Your final project incorporates everything you've learned: laying down philosophies and strategies with plenty of research using everything focus groups, interviews, in depth data and analysis. You'll be studying independently but we'll be on hand to support and guide you wherever you need us.





## Course duration and hours of study

This Top-up is taught over 8 months. Your course will be delivered through a blend of online and face-to-face teaching, compressing the number of days you need to be at the study centre.

You can find out more information on the course page, visit [www.arden.ac.uk](http://www.arden.ac.uk). Alternatively, please call our admissions team on:

0208 003 6196 for more details.

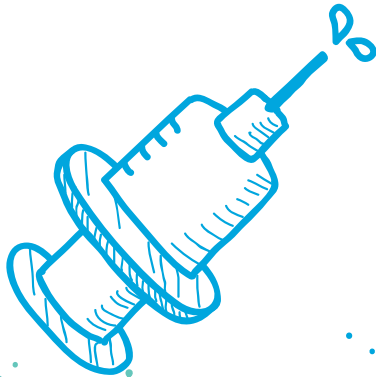
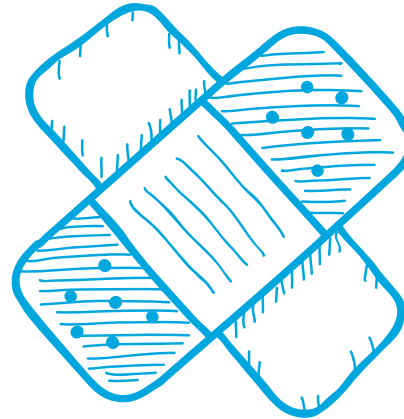
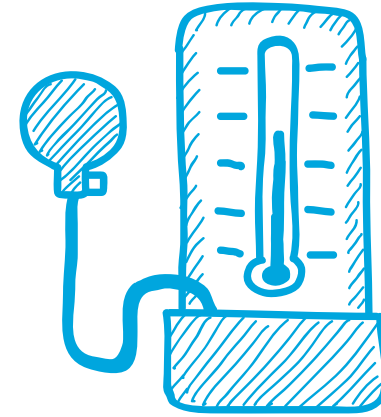
## Entry requirements

To be eligible for this course you should have:

A relevant HND or equivalent, provided that the total of your learning experience allows you to achieve the aims of the programme.

For students whose prior learning was not taught in English:

IELTS 6.0 or equivalent.



BLEND  
LEARNING  
UNDERGRADUATE  
COURSE  
UK ONLY

TOP  
UP  
COURSE

## How to apply

Visit: [www.arden.ac.uk](http://www.arden.ac.uk)

Email: [enquiries@arden.ac.uk](mailto:enquiries@arden.ac.uk)

Call: 0808 273 9759