



Do you want to become a confident healthcare professional? If you need complex healthcare know-how you're starting in the right place. By the end of this programme, you'll be able to make informed decisions that lead to better practise in this challenging and changing environment.

Modules are:

Year 1 (Level 4)

Skills for Learning in Care

This module gets to the nitty-gritty of modern healthcare. With strong focus on the developing world, we'll amp up awareness of cultural health issues, systems and nuances. How do we help those in poverty - and what are the barriers?

Social, Political and Ethical Issues in International Healthcare

Do you know how healthcare differs across the world? Or understand the impact of illness in developing countries? This module uncovers how different and conflicting cultures impact healthcare issues, systems and policies. You'll also explore elements of emergency, humanitarian and development aid.

Communication and Collaboration in Managing the Professional Environment

No decisions are made alone in social care. As a manager, it's your duty to make sure everyone is in the loop - including you. This module explores how to make your team successful. Who is responsible for what? Are we following the codes of practice? And does this all meet the needs of those we're caring for?



"The flexibility of the course is ideal for me as it fits around my job as a healthcare assistant in a maternity ward. I can apply my learning by asking my managers questions, getting a deeper insight into the work they do."

Cemene Wellington

Healthcare Student in Ealing



Meeting the Needs of Service Users

Would this service be good enough for my own family? That's the question at the heart of this module. You'll look at the goals and values of care: relationships with service users, helping people to change their own situations and the standards that need to be met.

Planning and Managing Resources

Ever wondered what makes the social work world go round? The answer is tip top resource management. How can you provide the best service, but stay cost efficient? There's plenty of tough decisions in this module - financial shortfalls, managing fraud and who gets what (financially).

Fostering Dignity and Respect

This module is important to us all. You'll be critically reflecting on your own personal values in terms of ethical issues, human rights, stereotyping and empathy. How can we respect all individuals, especially those who may be socially excluded?

Year 2 (Level 5)

Financial Control and Budgeting

Here we start looking at the finance side of things. You'll develop a must-have understanding of financial control and budgeting in a domestic and international healthcare environment.

Performance Improvement and Management in Health & Social Care

Decisions in social work are based on what's top priority. This module covers how to plan and control such decisions for top results. You'll learn how to forecast what's coming and create the best plan of action based on your workings.

Public Health

It's time to learn the true meaning of public health, and where better to start than the critical issues in today's public health policies and interventions. Looking at modern ideas and values, you'll understand the importance of ethics and data when assessing health programmes.

Health Promotion

This one's exactly as it reads, covering the idea, education and promotion of health and well-being. Not just diet and exercise but parenting, poverty, infectious diseases and substance use. How would you address, communicate and implement someone's health intervention?

Inter-Agency Working

Time to nail down those leadership skills. This module looks at local Health and Social Care agencies (councils, health boards etc). Using a case study, you'll research and report partners to work with in the area - specifying the best teams and tools to fulfil community needs.



Leading Teams in Health & Social Care

You now know the basics of leading a team - but do you know how to motivate them? Resolve conflicts? Improve performance? These are the main issues you'll learn in this module - looking at the characteristics that make great leaders and H&SC teams.

Year 3 (Level 6)

Quality Management in a Care Setting

How can you be the best manager possible? How do you make sure everyone in the team feels committed to your vision? This module is all about working with staff and service users to create a social care landscape that meets the needs of everyone.

Business Analysis and Planning

Get your technical head on. This is where you'll study business analysis: collecting data, using specialist software and reporting it all back to the team.

Global Health and Sustainability

What's your opinion on global sustainability issues? It's a complex subject, giving us plenty to discuss in this module. From resilience to global problems to the impact on healthcare, there's no right or wrong answers so get ready for some healthy debates.

Project Management and Risk

It's time for a management level-up. You'll learn the complexities of managing finances, projects and contracts. Staff performance, breaches and frustrations are examined - and you'll look closely at the ins and outs of insurance.

Research Methods and Final Project

Your final project requires proof of everything you've learned: laying down philosophies and strategies with plenty of red hot research. Studying independently (though we'll be on-hand whenever you need us), you'll be using everything focus groups, interviews, in-depth data and analysis to complete the big research finale.





Course duration and hours of Study

This course will take 3 years to complete. Your course will be delivered through a blend of online and face-to-face teaching, compressing the amount of days you need to be at the study centre.

You can find out more information on the course page, visit www.arden.ac.uk. Alternatively, please call our admissions team on:

0800 268 7737 for more details.

Entry requirements

To be eligible for this course you must have either:

Two subjects at GCE A level or equivalent, plus passes at grade C or above in three subjects at GCSE level or equivalent; or completed a recognised Access Programme or equivalent.

For students whose prior learning was not taught in English:

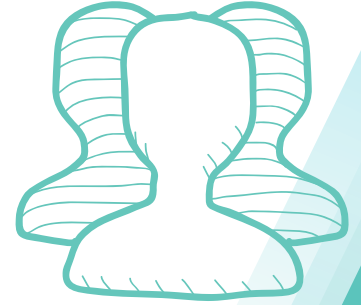
IELTS 6.0 or equivalent.

If you don't meet the entry requirements

We offer a 4 year route for this course which includes a foundation year. This option is perfect for those with a desire to return to education or seeking to develop key study skills in their first year.

If you have work experience

We're happy to consider an application from you if you can show us you have the motivation to study the programme.



BLENDED
LEARNING
UNDERGRADUATE
COURSE
UK ONLY

How to apply

Visit: www.arden.ac.uk

Email: contactus@arden.ac.uk

0800 268 7737