



Study two core Social Science disciplines for a joint honours degree. Both Psychology and Sociology explore human behaviours – but at different levels. While Psychology focuses on individuals, Sociology looks at broader social issues that affect those individuals; such as poverty, inequality and social injustice. These are examined alongside societal factors such as government policy and globalisation. You get the chance to take the individual and the social together, to give you a balanced understanding of how society functions.

Modules are: Level 4

Skills for Interdisciplinary Study

Whether it has been years since you studied or you have barely taken a breath since your last essay, this module is the gateway to your brand new course. We will be looking both at developing your skills as a learner and also helping you look at problems from different perspectives.

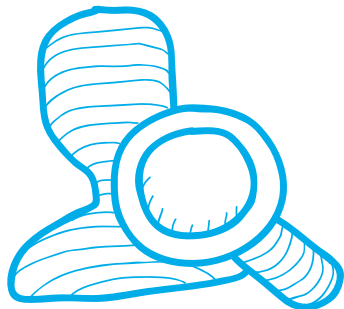
You will be introduced to your online academic community and discover more about the key skills needed for your course. You will, at the same time, be developing the personal skills demanded by employers to help you to improve your career prospects.

Introduction to Social and Developmental Psychology

Here, you'll get your first taste of two of the core domains of psychology: developmental and social psychology. Developmental psychology examines the changes in human beings over their lifespan, from infancy and childhood through adolescence, adulthood and ageing. The theories involved cover a huge range of topics including language acquisition, personality and ideas about the self and forming an identity. Through social psychology, you'll look at people's thoughts, feelings and behaviours and how they are influenced.

Introduction to Biological and Cognitive Psychology

You are introduced to two further core domains here: biological and cognitive psychology. You will learn about some of the biological processes and cognitive principles you need to understand psychology, including the basic structure and functions of the nervous system. Cognitive psychological processes are central to the way humans see, listen and learn new skills, so through this you will explore perception, attention, learning, memory and decision making - and get an introduction to the way cognitive psychologists explore human mental processes.





Introduction to Sociology

In this module you will be introduced to some of the central areas of sociology. You will meet the key thinkers, from Karl Marx and Max Weber to post-war theorists like Michel Foucault and Anthony Giddens, names you will become very familiar with as you progress through the programme.

Through these ideas - and by looking at class, gender, religion, family, race and more - you will begin to understand how people interact and how things we assume to be normal or natural are actually the product of a complex mix of learned social codes and rules.

Medicalisation of the Self

Hardly a week goes by without a story in the media about health issues. This module looks at the human body and how it has arguably become an object of control and surveillance.

You will discover how responsibility for human welfare has moved from the collective to the individual, and consider the origins and development of the welfare state.

You will look at a range of current media discussions, such as: people who break the 'rules' of a healthy society; the ethics of genetic engineering; and the rights of citizens as regards access to healthcare.

Key Studies in Psychology

In this module you'll take a look at several important studies in the history of psychology. These key works will give you a broad view of the different ways the mind can be investigated and some insight into the way that the discipline has evolved. You'll learn about the context in which they were developed and the impact they have had on different branches of psychology.

Level 5

Research and Ethics in Action

This project gives you the chance to showcase your abilities in a piece of work that you design. You will scope out a project and design a methodology to undertake it, learning how to consider different perspectives and developing a range of skills with wide application in the workplace. You will also be required to consider the ethical issues of the work that you are undertaking which will also give you a chance to think about how we should incorporate ethics into our decision making. At the end of the module, you will apply this in a practical way in your final project.

Social Psychology

One of the key things that you will have learned by now is that there is always more than one way to look at a problem. This module considers several different schools of thought as we consider how we might study individuals within groups.

You will look at how certain social groups, with their identities and beliefs, influence the way people think and behave in different situations. You'll examine communication, cohesion, decision making, leadership, and conflict within groups, comparing and contrasting the work of leading writers.

Personality and Intelligence

This module takes us into other key areas that psychology focuses on: personality and intelligence. You'll explore the key theories, debates, measurement and values of personality and intelligence.

Abnormality & The Deviant Other

On this module you will learn about two opposing schools of sociological theory. The belief that individuals unconsciously conform to social norms, versus the belief that we all have the ability to think independently and challenge the system.



You will look at what is considered abnormal, deviant and criminal - and how the media exaggerates certain crimes and targets stereotyped groups. As part of your study, you'll turn your attention to some topical case studies, for example; global terrorism and resulting attitudes and the growth of subcultures.

Cyber Communities & Social Networks

Our networks have changed drastically - from local communities to today's globalised cyber and social networks. You will strip down the central ideas of community and network, examine how communication has changed and take a look at how this has altered communities.

Then you will turn your focus to those technological communities and what effect they have on issues such as freedom of speech and security. You will look at who benefits from these changes - and who's left on the side-lines.

Protests, Mass Movements & Rebellion

How do social movements shape our societies? That's what you will be learning about here - how and why individuals come together with a shared sense of purpose to unite for a common cause.

You will look at the contexts in which protest movements form, partly by tracking key social movements of the past and partly through examining events emerging as you study.

There's a particular focus on the 'cycle of struggles' of 2011 that gave rise to uprisings including the Arab Spring and the Occupy movement.

By the end of the module, you'll have developed an understanding of your place in the world and the political and economic forces that affect you.

Level 6 Contemporary Developmental Psychology

How do people develop throughout their lives? This is the

module where you'll look at all the important theories and debates, from the development of self, gender identity and early social interaction to cognitive development and how childhood experiences can affect later development. You will be encouraged to look at the theories holistically, linking the latest thinking about how all the different aspects of development relate to each other, including biological, cognitive, language, social and contextual elements.

Cross-Cultural Psychology

Most psychological research has been done in the West - and that means it only really applies to a limited population. With borders between Eastern and Western cultures becoming increasingly blurred, psychology has turned its attention to the way different societies operate, how we understand each other and how we act towards each other. Cross-cultural psychology looks at the similarities and differences between cultures - and you'll learn how these kinds of studies are done, so you've

got the tools to carry out your own research. As you near the end of the programme you will be able to exercise your critical and analytical skills to develop practical solutions to problems and this module gives you the chance to do that by taking a case study approach.

Consumer Society & The Commodification of Beings

We hear a lot about the consumer society and this module will look at how neoliberal ideas, introduced in the late 1970s, have fundamentally changed our economy and our society.

You will look at how human beings have become both consumers and commodities, how products have been displaced by brands and how people use brands and celebrities to build their own identity. You will take a detailed look at the influence of some major brands and how their power impacts on original thinking.



Insecurity & Precariousness in the Globalised World

It is hard to avoid the fact that the global economy has changed our lives. Products and investments move around the world creating wealth or reinforcing poverty and arguably divide both countries and individuals within countries as 'winners' and 'losers'. This module will look at topical issues such as how austerity measures have impacted the UK, USA and Greece.

Research Planning & Project

This is the final module of your degree and gives you the opportunity to specialise in an area of the programme that has interested you the most. It is a major piece of independent work and throughout your study we will provide you with the skills that you need to complete it. Working with your supervising tutor, you will

choose an interdisciplinary area related to your degree to research. You will have the opportunity to apply all the skills you have learned throughout the programme to demonstrate your ability to design and implement a piece of work. This provides a showcase for your abilities and something that evidences the sorts of skills demanded by employers.

Course duration and hours of study

This varies depending on your rate of progress - you can access modules at a pace that is convenient for you. Once you have accessed a module, there is a minimum and maximum time that you will need to finish the module within.

You can find out more information on the course page, visit www.arden.ac.uk. Alternatively, please call our admissions team on:

+44 (0) 2476 515700 or

0800 268 7737 for more details.

Entry requirements

To be eligible for this course you must have either:

Two subjects at GCE A level or equivalent, plus passes at grade C or above in three subjects at GCSE level or equivalent; or completed a recognised Access Programme or equivalent.

For students whose prior learning was not taught in English:

IELTS 6.0 or equivalent.

If you have work experience

We're happy to consider an application from you if you can show us you have the motivation to study the programme.

How to apply

Visit: www.arden.ac.uk

Email: admissions@arden.ac.uk

Call: +44 (0) 2476 515700 / 0800 268 7737